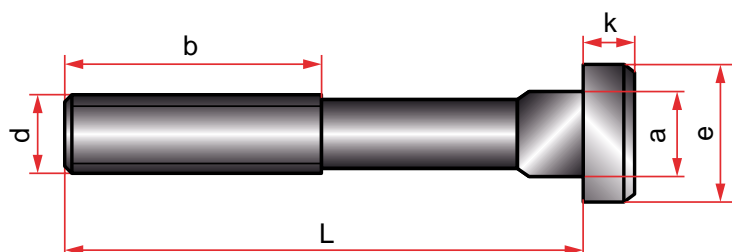
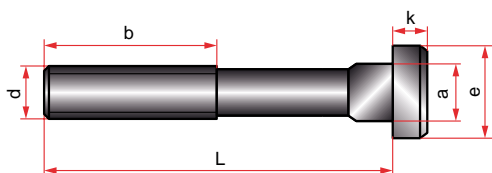


BR787

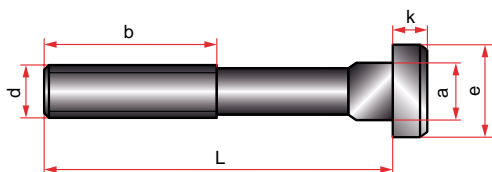
T slot bolts forged
 Tensor forjado
 Śruba do rowków teowych
 Parafuso em T
 Boulons forgés en T



d	L	b	a	k	e	REF.
M10	40	30	9,7	6	15	BR787/10M10x 40
	63	45				BR787/10M10x 63
	100	60				BR787/10M10x100
M12	50	35	11,5	7	18	BR787/12M12x 50
	63	40				BR787/12M12x 63
	80	55				BR787/12M12x 80
	100	63				BR787/12M12x100
	125	75				BR787/12M12x125
	160	100				BR787/12M12x160
	200	120				BR787/12M12x200
M12	50	35	13,5	8	22	BR787/14M12x 50
	63	40				BR787/14M12x 63
	80	55				BR787/14M12x 80
	100	63				BR787/14M12x100
	125	75				BR787/14M12x125
	160	100				BR787/14M12x160
	200	120				BR787/14M12x200
M14	63	45	15,5	9	25	BR787/16M14x 63
	80	55				BR787/16M14x 80
	100	63				BR787/16M14x100
	160	100				BR787/16M14x160
	200	120				BR787/16M14x200
	250	160				BR787/16M14x250
M16	63	45				BR787/16M16x 63



d	L	b	a	k	e	REF.	
M16	80	55	15,5	9	25	BR787/16M16x 80	
	100	63				BR787/16M16x100	
	125	75				BR787/16M16x125	
	160	100				BR787/16M16x160	
	200	125				BR787/16M16x200	
	250	160				BR787/16M16x250	
	63	45	17,5	10	28	BR787/18M16x 63	
	80	55				BR787/18M16x 80	
	100	63				BR787/18M16x100	
	125	75				BR787/18M16x125	
	160	100				BR787/18M16x160	
	200	125				BR787/18M16x200	
	250	160	BR787/18M16x250				
	M20	80	55	19,5	12	32	BR787/20M20x 80
		100	63				BR787/20M20x100
		125	85				BR787/20M20x125
160		110	BR787/20M20x160				
200		125	BR787/20M20x200				
250		160	BR787/20M20x250				
315		180	BR787/20M20x315				
80		55	21,5				14
100		63		BR787/22M20x100			
125		85		BR787/22M20x125			
160		100		BR787/22M20x160			
200		125		BR787/22M20x200			
250		160		BR787/22M20x250			
315		180		BR787/22M20x315			
M24		100		70	23,5	16	
		125	85	BR787/24M24x125			



d	L	b	a	k	e	REF.
M24	160	110	23,5	16	40	BR787/24M24x160
	200	125				BR787/24M24x200
	250	160				BR787/24M24x250
	315	180				BR787/24M24x315
	400	250				BR787/24M24x400
	100	70	27,5	18	44	BR787/28M24x100
	125	85				BR787/28M24x125
	160	110				BR787/28M24x160
	200	125				BR787/28M24x200
	250	160				BR787/28M24x250
315	180	BR787/28M24x315				
400	250	BR787/28M24x400				